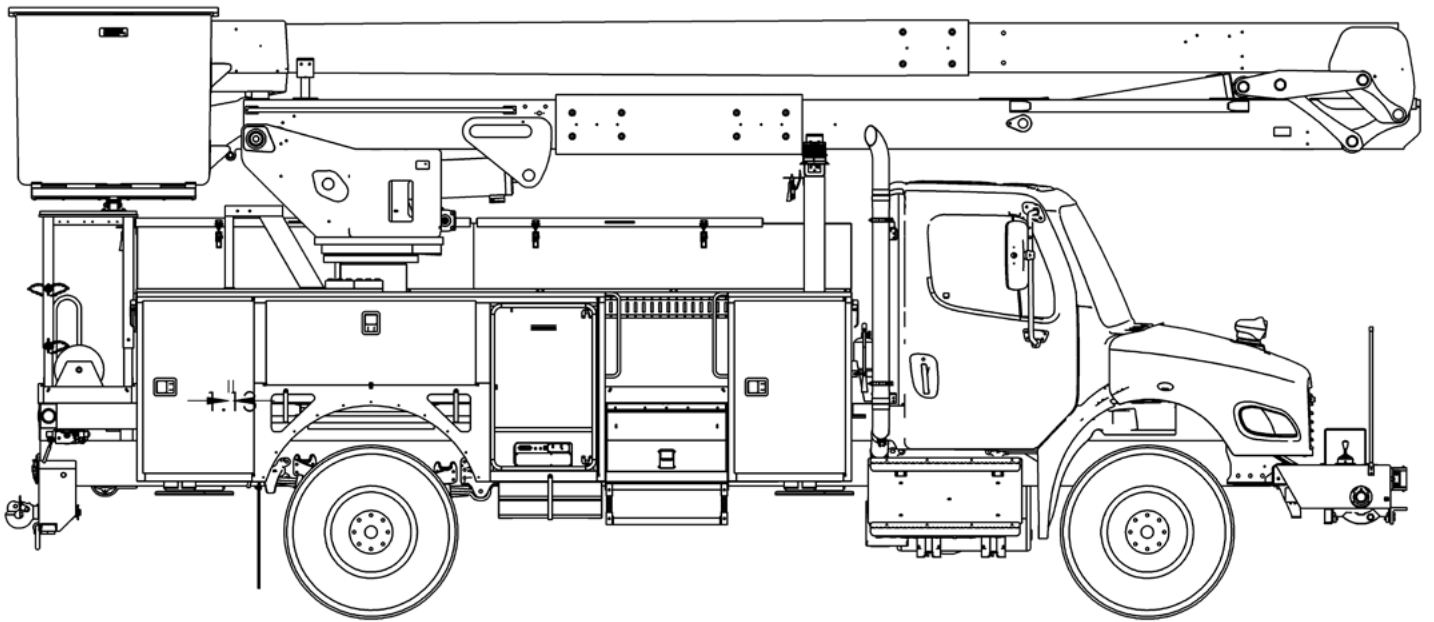




TECH TIPS

PROGRAMMING THE NAVITAS TOP CHARGER

NO. 32



SERVICE CALL:
PROGRAMMING THE NAVITAS TOP
CHARGER



MODEL(S):
48V HYPOWER™ SYSTEMS



TOOLS NEEDED:
PC PROBIT II SOFTWARE
CONNECTING CABLES

TEREX UTILITIES TECHNICAL SUPPORT TEAM

PHONE: 1-844-TEREX4U (1-844-837-3948) | EMAIL: UTILITIES.SERVICE@TEREX.COM



DANGER

Failure to obey the instructions and safety rules in the appropriate Operator's Manual and Service Manual for your machine will result in death or serious injury.

Many of the hazards identified in the Operator's Manual are also safety hazards when maintenance and repair procedures are performed.

DO NOT PERFORM MAINTENANCE UNLESS:

- ✓ You are trained and qualified to perform maintenance on this machine.
- ✓ You read, understand and obey:
 - manufacturer's instructions and safety rules
 - employer's safety rules and worksite regulations
 - applicable governmental regulations
- ✓ You have the appropriate tools, lifting equipment and a suitable workshop.

The information contained in this Tech Tip is a supplement to the Service Manual. Consult the appropriate Service Manual of your machine for safety rules and hazards.



TECH TIP 32 | RELEASED 03.15.2022 | VERSION 1.0
©TEREX UTILITIES. ALL RIGHTS RESERVED

CONTENTS

TECH TIP #32

TOC

4

| Connect laptop
| Start PC Probit II

STEP 1 - STEP 2

10

| Disconnect

STEP 9

5

| Set-up program connection

STEP 3 - STEP 4

6

| Connect to the top charger
| Choose Boost Mode

STEP 5 - STEP 6

8

| Update current draw

STEP 7

9

| Apply changes

STEP 8

STEP 1

Connect your laptop to the Navitas Top Charger using the USB to Serial connecting cable. Once connected, start the PCProBitII Software.

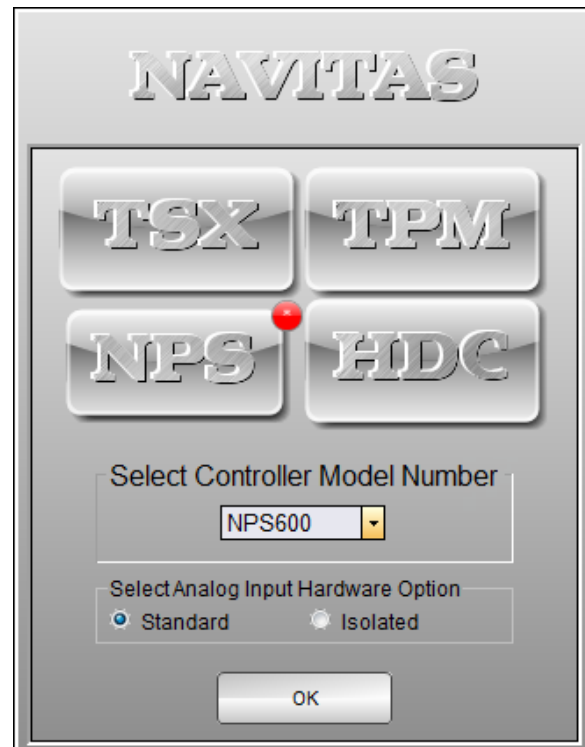
***Note:** The Top Charger must be powered up with the flashing green light visible to connect. Depending on installation wiring, it may only be powered up during an engine charge.



TOP CHARGER

STEP 2

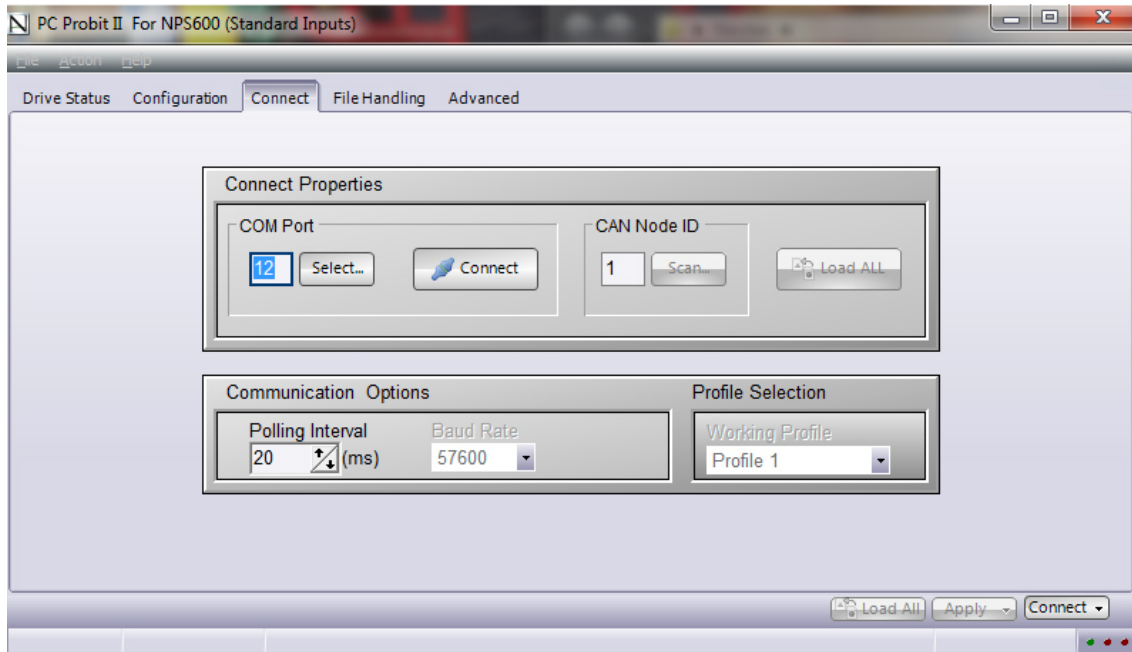
The program will open to the initial menu shown below. Make sure the Controller Model Number is set to NPS600 before clicking on the OK button.



PROGRAM OPENING SCREEN

STEP 3

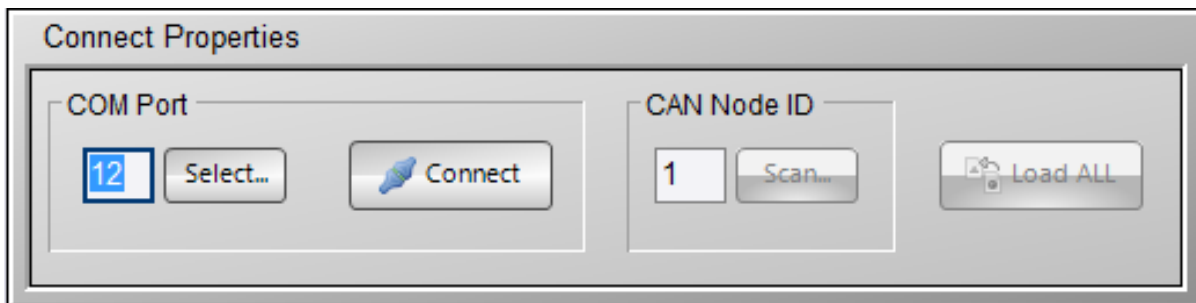
To communicate with the Navitas Top Charger, click on the *Connect* menu shown below.



STEP 4

In the COM Port section, click the Select button to choose the correct port. Choose the port named: CP210x USB to UART.

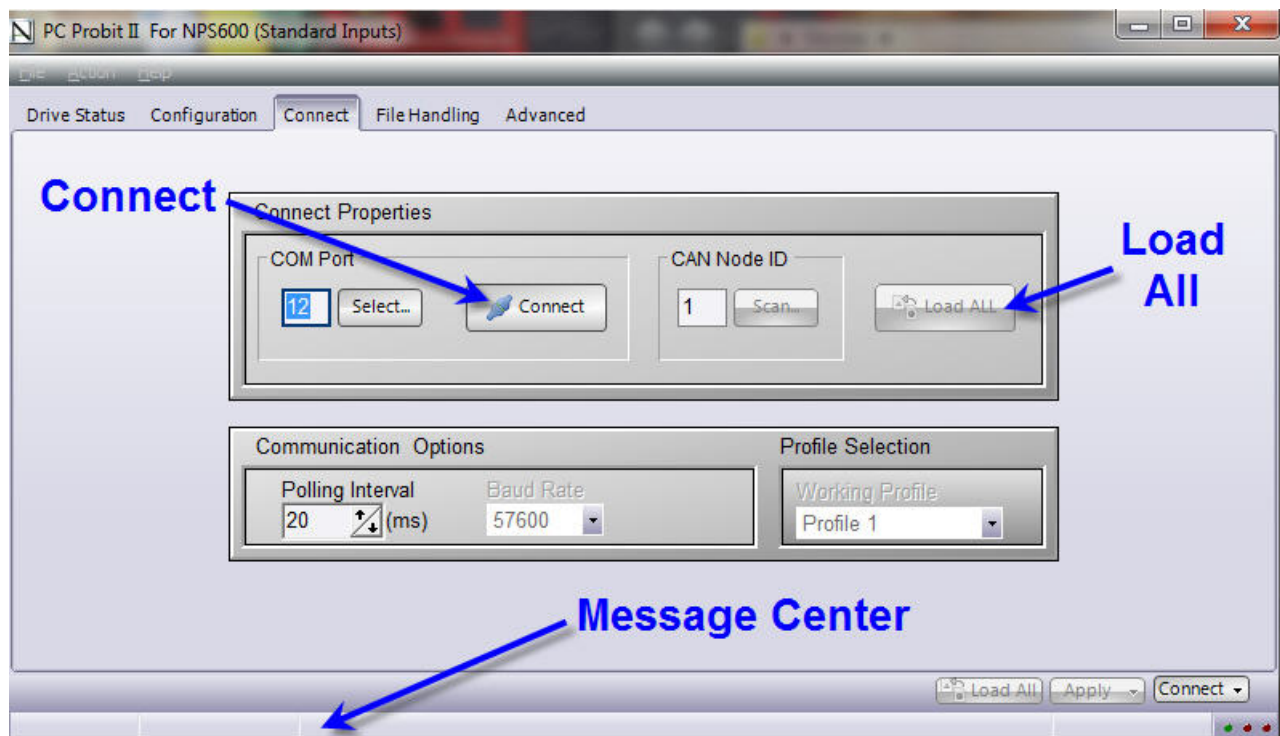
Verify that the CAN Node ID is set to 1.



STEP 5

Click on the *Connect* button to initialize the connection. Once the connection has been established, click on the *Load ALL* button to retrieve all the system variables from the Top Charger.

The program will provide feedback about the progress or any errors encountered in the message center at the bottom.



STEP 6

Once all of the parameters have been loaded, switch to the *Configuration* tab and select the *System* sub-tab.

In the *System Control* pane, the topology must be set to **Boost Mode**. Depending on which mode is selected, different options in the program are hidden or shown.

If **Boost Mode** is selected by default, switch the mode to **Motor Control** and then back to **Boost Mode** to verify you have access to the correct settings.

PC Probit II For NPS600 (Standard Inputs)

Drive Status Configuration Connect File Handling Advanced

System Primary Throttle Digital I/O Contactor Phase Control CAN

System Voltage

System Voltage	Battery Full V.	Over-Voltage Protection
12.00	12.69	Disabled
Pre-Charge Voltage	Battery Empty V.	Trip Point
6.01	10.50	62.00

System Control

Topology	Max Output Voltage
Boost Mode	56.81
	Peak Regen Voltage
	56.00

BDI Setup

BDI Enable State	Trip Voltage	Reset Voltage
Disabled	30.21	30.89
	Forward Cutback %	Reverse Cutback %
	79.7	79.7

Timing (milliseconds)

PWM Phase Freq. (Hz)	SRO Forgive Time	Neutral to Stop Time	Dir. Change Forgive Time
55,000	500	3,000	5,000

Load All Apply Connect

Poll All Status Params Done.

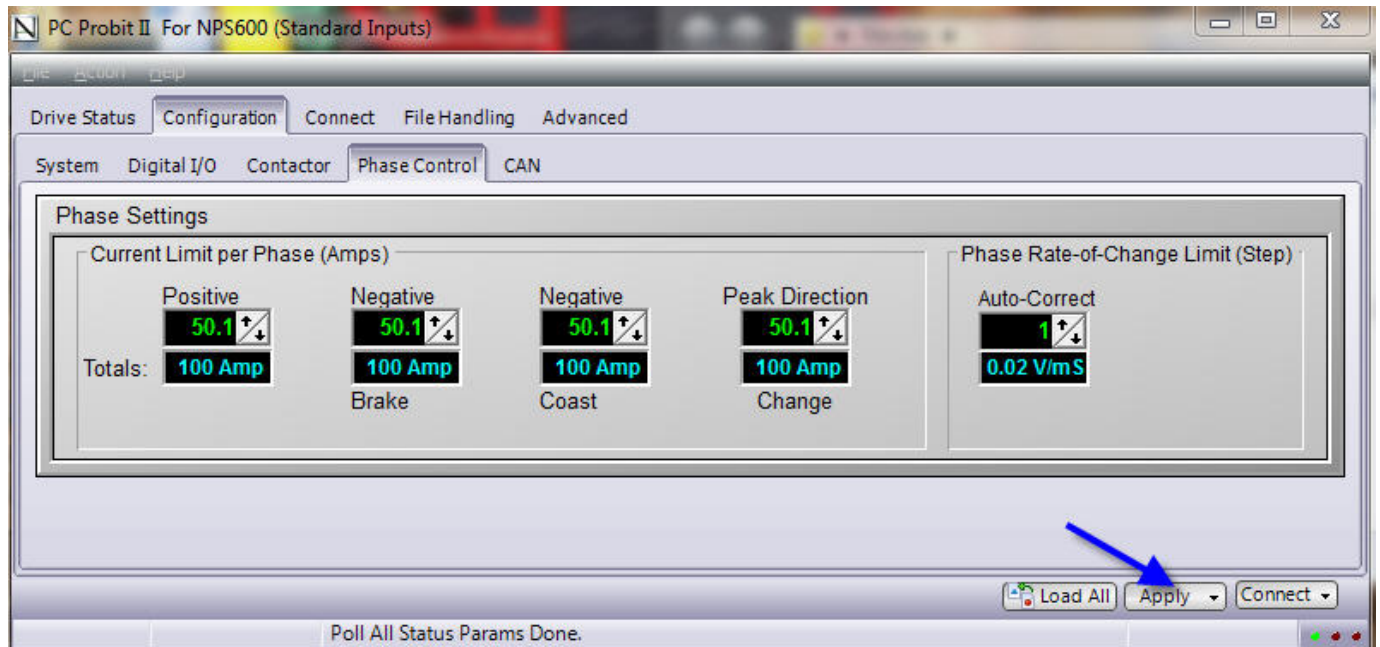
STEP 7

To change the maximum current draw on the Navitas Top Charger, switch to the *Phase Control* sub-tab under *Configuration*.

The maximum current draw for the Top Charger should be set to 100 amps for:

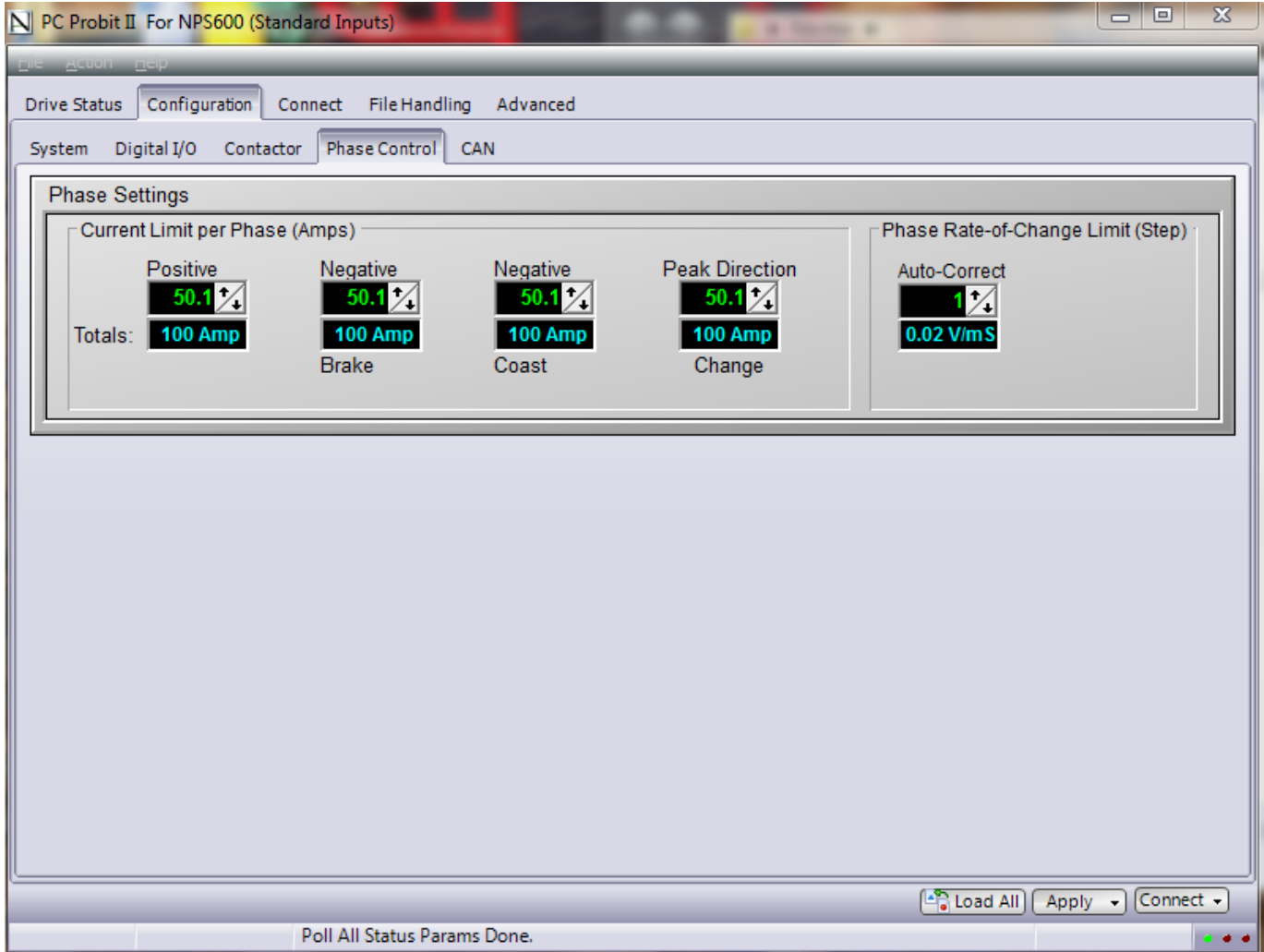
- Positive
- Negative – Brake
- Negative – Coast
- Peak Direction

Use the arrows by each setting to make any necessary adjustments. Each setting controls the positive and negative phases – set each value down to 50.1 to get an accumulative 100 amps.



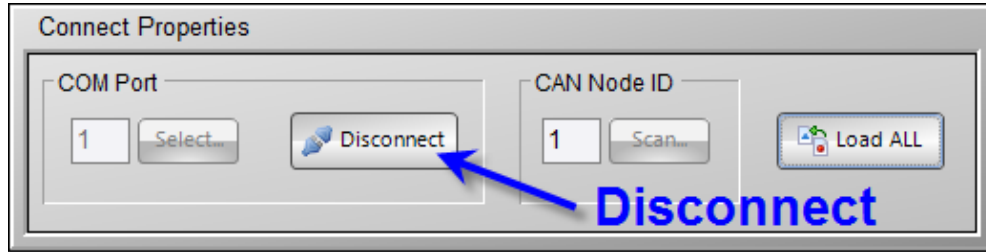
STEP 8

Once all the settings have been changed, click on the *Apply* button and choose “*Apply Changed*” to save the changes.



STEP 9

Once all of the Current Limit settings have been saved, switch back to the Connect tab and press the *Disconnect* button before closing out the program.





FOR FURTHER ASSISTANCE,
CONTACT THE TEREX UTILITIES TECHNICAL SUPPORT TEAM
PHONE: **1-844-TEREX4U (1-844-837-3948)** | EMAIL: **UTILITIES.SERVICE@TEREX.COM**
